



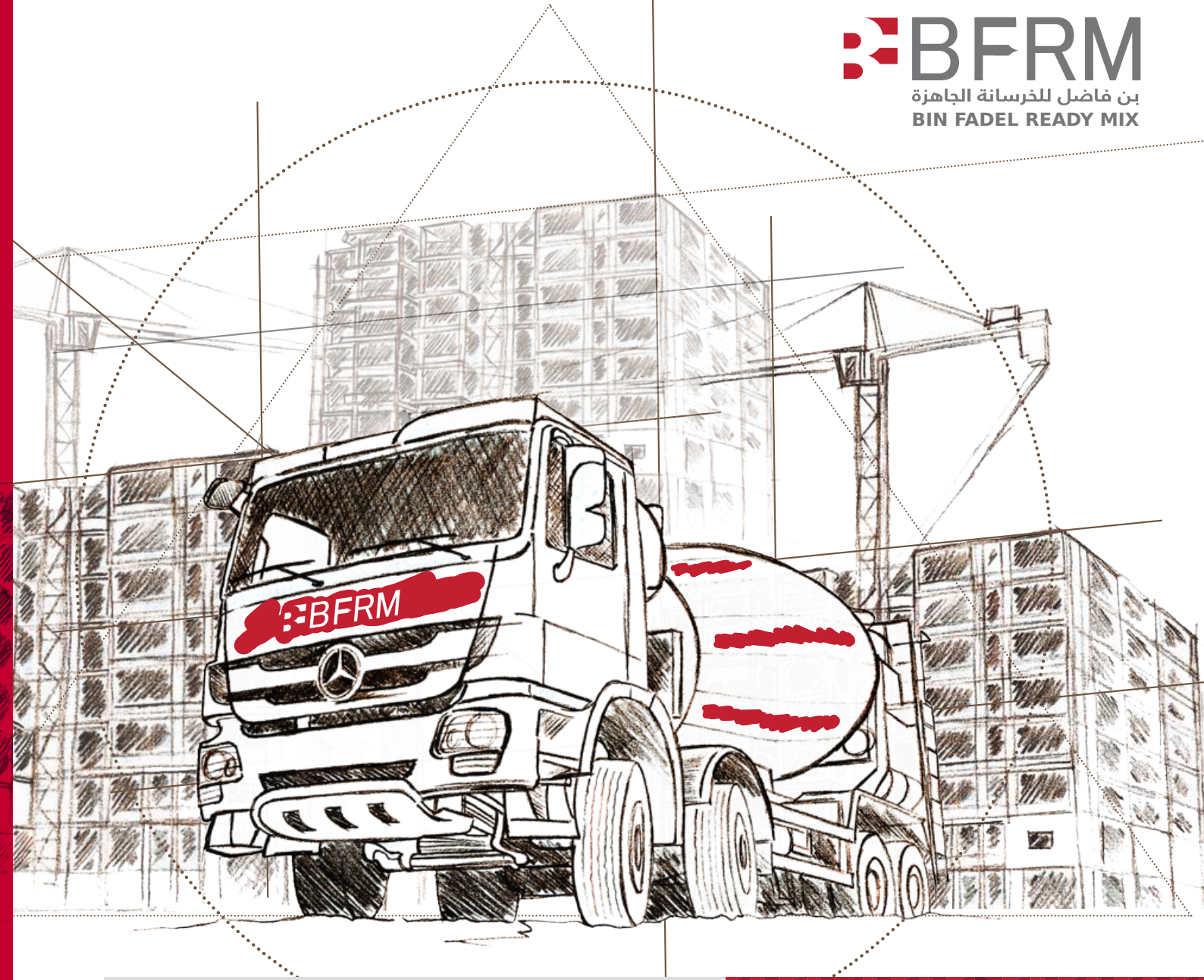
Head Office

Al Ain, P.O.Box : 17656, Al Ain,
United Arab Emirates

T. +971 3 721 2300
F. +971 3 721 5049
E. bfrm@binfadel.ae
www.binfadel.ae



BFRM
بن فاضل للخرسانة الجاهزة
BIN FADEL READY MIX



Highly Advanced READY-MIX Brand

www.binfadel.ae



**SUCCESS
THROUGH
TRUST**

06

CEO's MESSAGE

10

ABOUT BFRM

11

VISION & MISSION

14

ORGANIZATION CHART

17

TEAM

23

LOCATIONS

27

ECO CONCRETE

29

PUMPS

30

EQUIPMENT

39

PRODUCT RANGE

43

QUALITY CONTROL
DEPARTMENT

46

CERTIFICATES

49

CLIENTS & PROJECTS

53

PROJECTS





CEO's MESSAGE

As we welcome you, Bin Fadel Al Mazroei Ready Mix LLC is entering its 27th year of excellence, dedication, commitment, and resilience. Since our establishment in 1995, we have keenly strived to exceed clients' contentment because we believe that anything worth doing is worth doing right the first time. Our reputation as the top-notch ready-mix concrete provider has been unparalleled, that too of the best quality and at unmatched prices. Our sheer dedication has earned BFRM the 5-star ratings as the sterling ready-mix concrete supplier in the Al Ain City. Because of our passion for growing and serving, we introduced ALAS Emirates Ready-Mix in 2008, a highly advanced and refined Austrian ready-mix brand to widen our scope.

Our organization has poured blood, sweat, and tears into this decades-long journey to climb the ladder of elevated heights. The journey was daunting, but we have earned the trust with our enthusiasm, expertise, and knowledge. We take pride in taking timely measures of accuracy that paved our path for rock-solid success in today's competitive market.

Over the years, BFRM took innovative measures to unearth new horizons that elevated us in delivering premium quality concrete and helped us continue our legacy of quality over anything. Today, as we move forward in another year, we have emerged as the pioneers of ready-mix concrete suppliers in the Emirates (Abu Dhabi). And the entire credit goes to the highbrows in our organizations who strive to fulfill our vision with great zeal and devotion.

But – taking pride in whom we are and what we do does not mean that we can sit back and rest on our laurels. As a leading supplier, we regularly discover new ways to produce exceptional concrete using our expertise and harnessing the prowess of technology at the same time. Moreover, our products and services vouch for the diligence and persistent endeavors that we continue to adopt.

At BFRM, we have congregated a team well aware of the surging environmental challenges that our mother earth is facing. And as a result, we make more concentrated and steady efforts to devise new measures that reflect our sense of responsibility. Moreover, we have undergone prompt alterations to comply with UAE's environmental requirements.

We hope you will take a few minutes to explore our website and discover ourselves about our achievements, capabilities, and teamwork, which have become the rock-solid reason for us to be on the top charts.

Petr Celis Chief Executive Officer, Bin Fadel READY MIX



ABOUT BIN FADEL

The Bin Fadel Group embarked on a journey of success in 1996 through the establishment of the Bin Fadel Ready Mix Company, which has become a leading company in the domain of ready mix concrete in the UAE. Another success story was born in 2008 when the Bin Fadel Group introduced ALAS as a highly advanced Austrian ready-mix brand which was formed in 1959.

Bringing together 50 years of rich experience in the ready mix business, along with 12 high-standard locations based in the UAE, extraordinary chosen equipment and the best team of experts, we at BinFadel Ready mix endeavor to do better than we have ever done before. As honesty and integrity are our guide in all we do, continuous improvement in our approach and respect for our community and environment is our focus. We are promising a constant growth, customer satisfaction and loyalty to achieve the vision of the UAE 2030.



VISION

- ▶ To drive a sustainable development, paralleled with the correct business ethics in order to become the leading supplier of ready-mixed concrete in the UAE by exceeding expectations in terms of product quality and customer satisfaction.

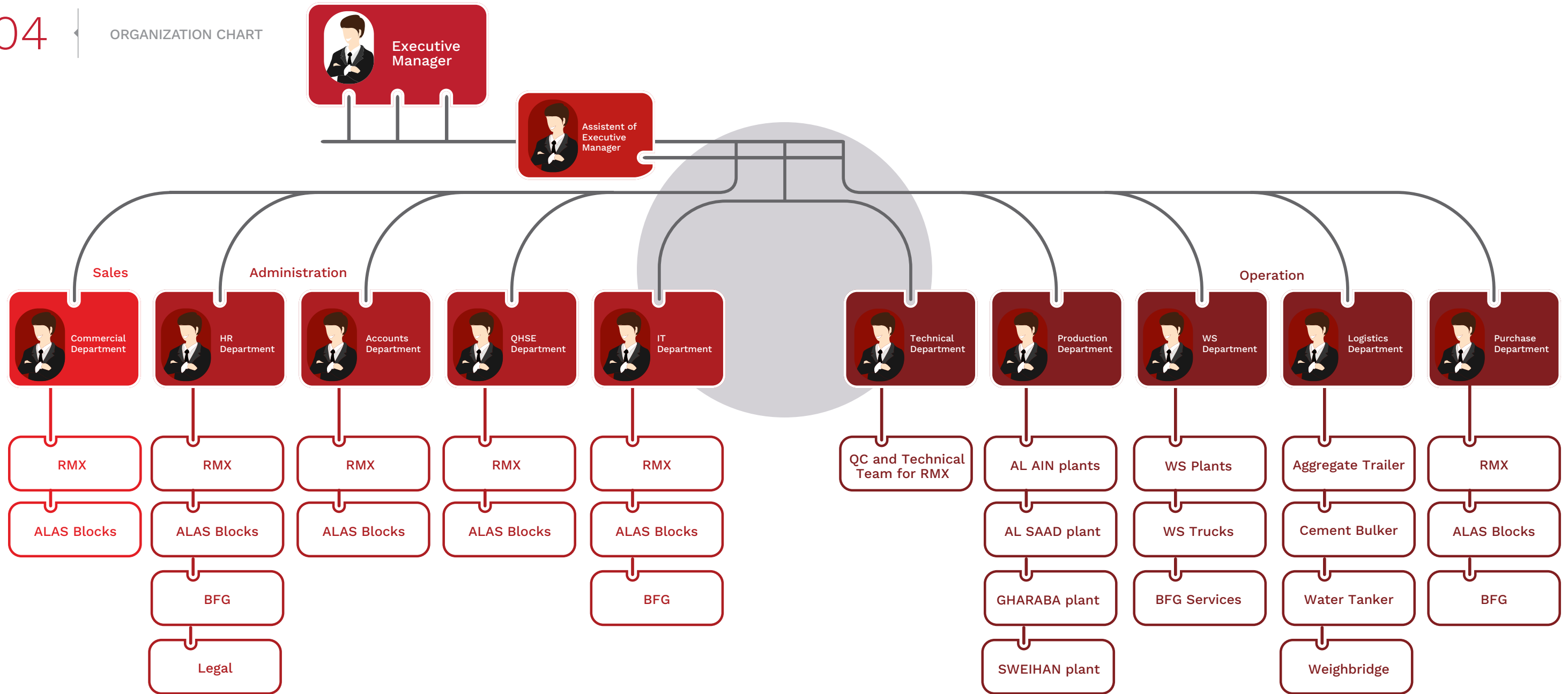
MISSION

- ▶ We at BFRM, have chosen to mirror our mission as follows:
 - To provide our clients with a superior product through constant innovation and adaptation of technology, focusing on the growing demands in the quality of ready-mix with prestige and pride.
 - To be keen in creating a long-term relationship with our clients by providing excellent service at the best price.

- To be reliable and flexible in terms of product and service delivery regardless of our clients' project tenure and value.

- To become completely mobile so we can serve our clients in their specific area of need.







SENIOR MANAGEMENT PROFILE

05

TEAM



Naseer Alshimmary,
Executive Manager MSc.
Civil Engineering, construction
materials, Certified DM
materials engineer, Iraq

With more than 28 years of
valuable experience in the field
of ready-mix concrete industry
as operations and technical
management.



Eng. Muneer Jadan Qutish
- Sales Manager Diploma in
Engineering, Syria

27 years of experience in
Marketing & Ready-mix Sales
in Middle East. Excellent
communication skills.



Akram Al Kawy, Purchase
Manager Bachelor in
Economics, Egypt

22 years of Procurement
experience in Egypt & U.A.E.
Middle East.



Shair Abbas, Assist. of
Operation Manager
Industrial training diploma in
Automobile

24 years experience of Office
Administration & Executive
Secretaryship



Peter Junior, Head of
Accountants
Bachelor in Commerce,
India, Post Graduate
Honors Diploma in Systems
Management – NIIT- Bombay.
Diploma in Financial
Management.

37 Years of worthy experience
in management and general
accounting in India and U.A.E.



Tuseef Ahmed, IT Manager
Bachelor Degree in Computer
Science. MCITP, MCSE,
CCNA, ITIL V4, AZURE CLOUD
ASSOCIATE, Pakistan

16 years of experience for IT
operations management in
Pakistan and U.A.E



Eng. Pradeep Kumar,
Technical Manager Diploma
In Civil Engineering. **NRMCA**
Certified-(CTME) India

Having 14 years experience in ready mix concrete industry in UAE, handling technical and QA/QC areas. In addition to that 13 years worked experience in the construction materials testing and reporting field in Abu Dhabi.



Amer Daoud
Head of HR
Bachelor of electronic
engineering, Jordan

14 Years experience of HR resource and development.



Haneef Mohammed
Thaslim, Safety Officer
Diploma In Occupational
Health,Safety, Environment
& Risk Management.
DEEE, DFSE.

5 Years experience in field Of Occupational Health, Safety, Environment in UAE



Sher Ahmed Khan Gul,
Workshop Manager - Bin
Fadel Ready Mix
Bachelor of Arts, Pakistan

27 years of worthy experience in workshop management in U.A.E.



06

LOCATION

- 01

BIN FADEL READY MIX SANAIYA BATCHING PLANTS
T : +971 3 721 2300
F : +971 3 721 5049
E : bfrm@binfadelae
- 02

AL SAAD BATCHING PLANT
M : +971 50 318 6096
E : bfrm@binfadelae
- 03

GHARABA BATCHING PLANTS
M: +971 56 367 7276
E: bfrm@binfadelae
- 04

SWEIHAN BATCHING PLANT
T : +971 50 533 0193
E : bfrm@binfadelae
- 05

YAS ISLAND BATCHING PLANT
M: +971 50 811 6080
T: +971 2 582 8802
E : pyas@alas-emirates.ae
- 06

MAFRAQ BATCHING PLANTS
T: +971 2 582 8802
F: +971 2 582 8803
E: readymix@alas-emirates.com
- 07

RIYAD CITY
M: +971 50 000 0000
E : dummy@alas-emirates.ae
- 08

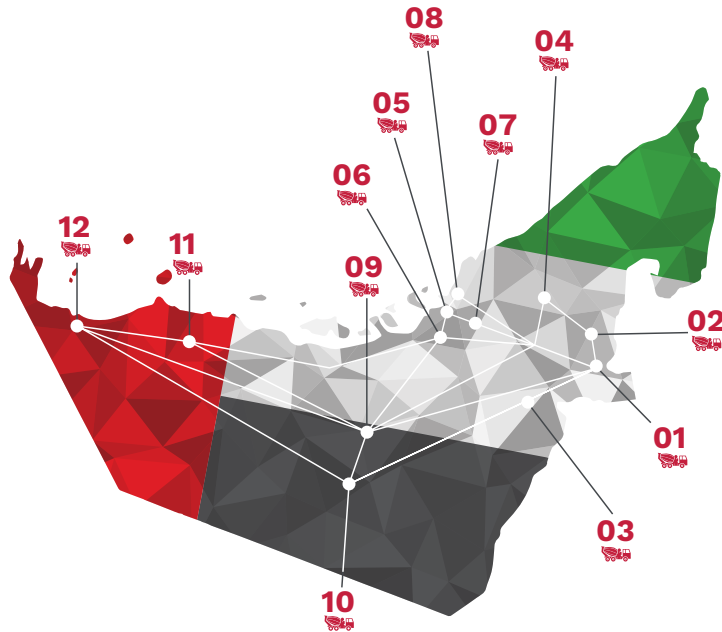
KIZAD BATCHING PLANT
M: +971 54 447 4926
E : p.kizad@alas-emirates.ae
- 09

MADINAT ZAYED BATCHING PLANT
M: +971 56 484 1845
E : p.mbz@alas-emirates.com
- 10

LIWA BATCHING PLANT
T : +971 56 484 1845
E : p.liwa@alas-emirates.ae
- 11

JEBEL DHANNA BATCHING PLANT
M: +971 50 446 2416
E : p.jd@alas-emirates.ae
- 12

SILA BATCHING PLANT
M: +971 50 446 2416
E : p.sila@alas-emirates.com



WE CAN BE WHEREVER YOU NEED US TO BE.

LOCATION	TYPE OF CONCRETE BATCHING PLANT	PRODUCER	1 BATCH	CP/HR	CONTROL SYSTEM	TYPE	ICE PLANT, CHILLER
Al Ain Sanaiya	STATIONARY	CIFA ITALY	2x 2.25m³	2x 100m³	ONYMA ITALY	2x TWIN SHAFT MIXER CIFA MIX 100	KTi 42t/DAY, 176M³/DAY
Al Saad Al Ain	STATIONARY	ELKOMIX TURKEY	3m³	135m³	ELKON TURKEY	TWIN SHAFT MIXER	KTi 42t/day, 168m³/day
Gharaba	STATIONARY	ITALY	3m³	120m³	ONYMA ITALY	TWIN SHAFT MIXER SICOMA MIX 120	KTi 96m³/day
Sweihan	MOBILE	FRANCE	2.25m3	100m³	ONYMA ITALY	TWIN SHAFT MIXER SIMEM ITALY	42t/day, 168m³/day
Yas Island Plant	STATIONARY	TEXNOKAT	2 x 5m³	2 x 240m³	MARTEK CZECH REPUBLIC	TWIN SHAFT MIXER SICOMA ITALY"	KANDLER 576t/ day
Mafraq	"STATIONARY	CIFA ITALY	2x 2.25m³	2x 100m³	MARTEK CZECH REPUBLIC	2x TWIN SHAFT MIXER CIFA MIX 100	86t/day, 336m³/ day
Riyad City	SEMI MOBILE	MERKO CZ	3m³	130m³	MARTEK CZECH REPUBLIC	TWIN SHAFT MIXER BHS MBP3DKXS	KANDLER ICE 18t/day,
Kizad (Taweelah)	SEMI MOBILE	MERKO CZ	2 x 3m³	2 x 130m³	MARTEK CZECH REPUBLIC	2 X TWIN SHAFT MIXER BHS MBP3DKXS	Kandler ICE 6t per hour
Madinat Zayed	SEMI MOBILE	MERKO CZ	3m³	130m³	MARTEK CZECH REPUBLIC	TWIN SHAFT MIXER BHS MBP3DKXS	42t/day, 186m³/day
Liwa Batching Plant	STATIONARY	ITALY	3m³	120m³	MARTEK CZECH REPUBLIC	TWIN SHAFT MIXER SICOMA MIX 120	20t/day, 96m³/ day
Jabel Dhanna	MOBILE	EUROMIX 3000	3m³	120m³	MARTEK CZECH REPUBLIC	TWIN SHAFT MIXER SIMEM ITALY	42t/day, 186m³/ day
Al Sila	MOBILE	EUROMIX 2000	3m³	100m³	MARTEK CZECH REPUBLIC	TWIN SHAFT MIXER SIMEM ITALY	20t/day, 96m³/day

Bin Fadel Ready Mix and ALAS Emirates Ready Mix LLC invest in high-class European machinery and equipment that meets all International standards.

All of our batching plants are from top European brands manufactured by CIFA, SICOMA, SBM and lately by MERKO (Czech Republic) with BHS mixers. These batching plants are among the global leaders of exemplary top performing batching plants in the industry. We use German KTI concrete cooling systems as standard cooling equipment for all plants.

DORNER Electronic, Onyma and Martek Electronic are Europe's leaders of software solutions; they provide us with high-tech as well as tailor-made solutions for ready-mix processing.

Site laboratories are available in all our batching plant locations, fully furnished with testing equipment that is needed for our products and services. It is also notable that all of our subsidiary facilities from workshop and diesel area are equipped with the latest machineries from top brand producers such as CAT and Komatsu.

The highlight of our mobile and semimobile concrete batching plants are the independence of both electricity and water supplies, which offers a suitable working environment at construction sites. Our great concern about the surrounding environment led us to achieve a level of zero waste. Returned concrete is treated in recycling machine so that waste water and aggregate can be reused in the working process. We also keep ourselves updated and open in Environmental, Quality, Health and Safety Standards and take regular measures in superseding all expectations.

**WE ARE
BASED IN 12
LOCATIONS
IN UAE**



ECO CONCRETE

"The Bin fadel Ready mix believes in producing eco friendly concrete. It requires less amount of energy for the production process, emits less carbon dioxide than traditional concrete, and it has less impact on the environment. This green concrete is giving better performance in the plastic and hardened properties such as consistency, strength & durability." Our manufactured concrete is better in performance, reduces shrinkage, enhances cohesion consistency, and is cost-effective. We use the latest technology stack combined with unparalleled skills and expertise to accomplish the noteworthy cause.

SUSTAINABILITY

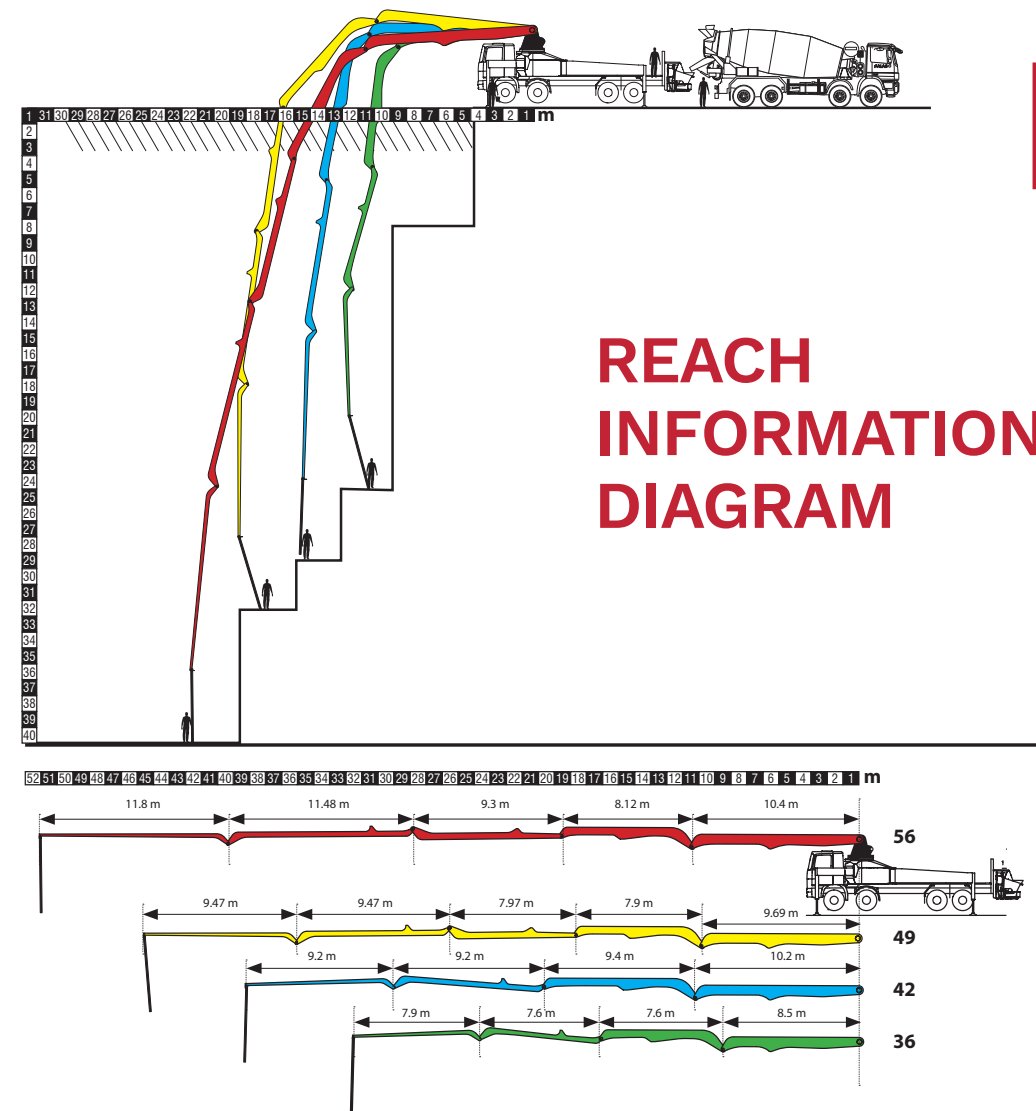
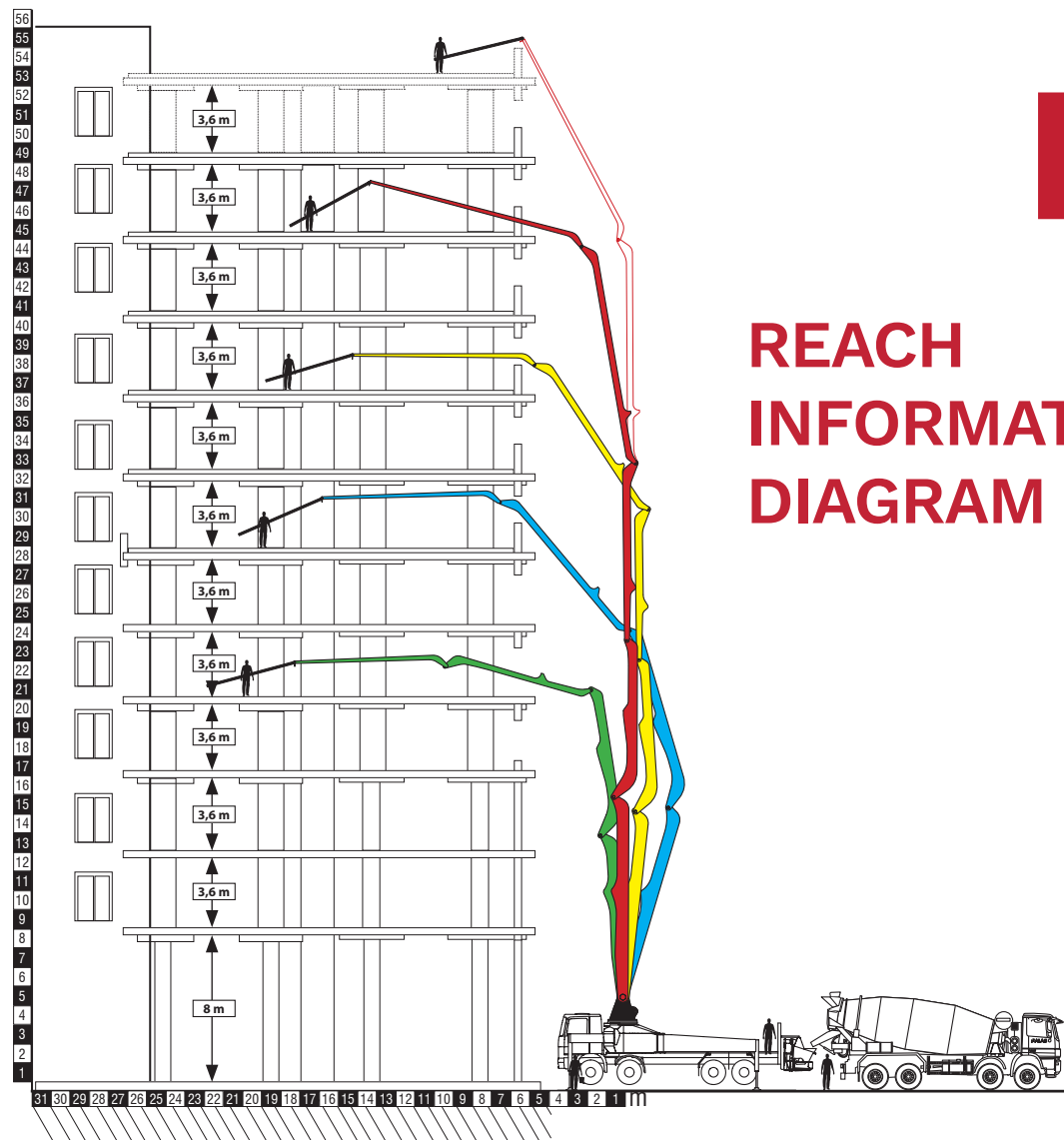
The Bin Fadel Group is a premium ready-mix concrete supplier in the UAE that drives innovation, expertise, and wisdom to attain a sustainable future. We are committed to achieving a climate ambition by delivering eco-friendly concrete in cooperation with researchers from Top European Universities. With this collaboration, we are marching toward achieving sustainable development goals by eliminating the CO₂ footprint and producing carbon-neutral concrete.

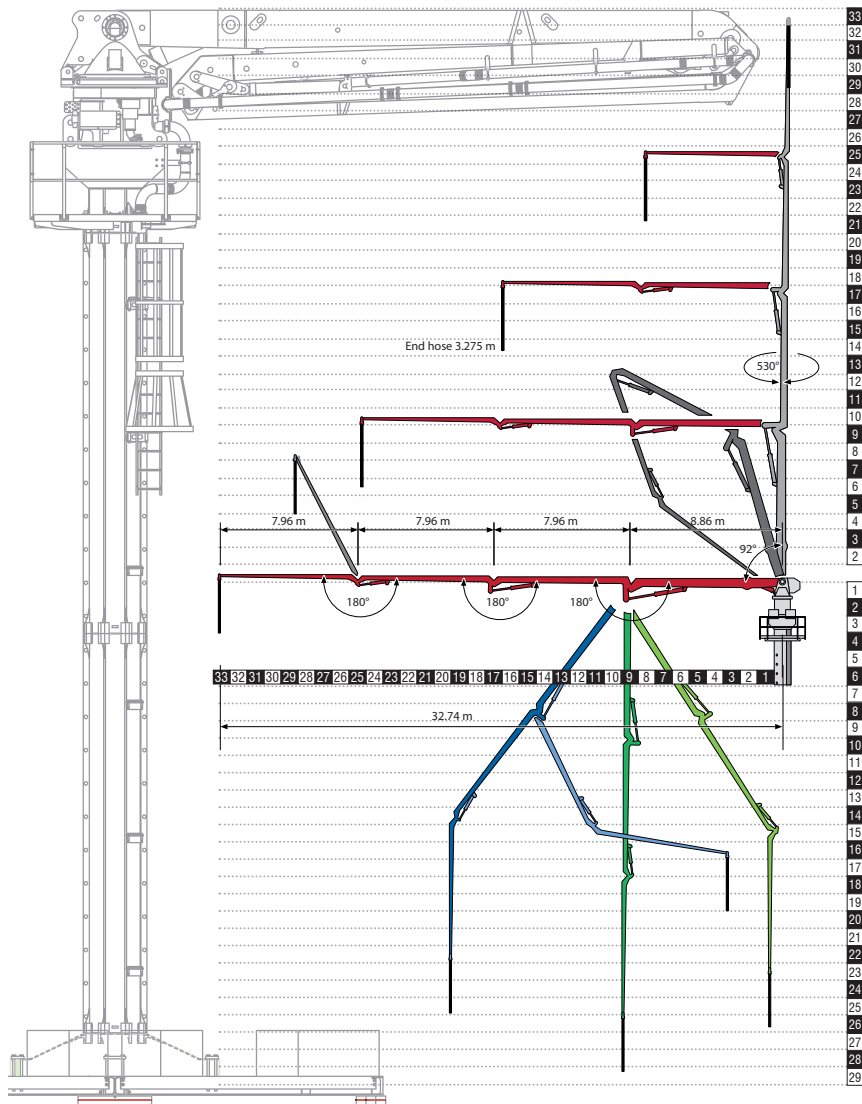
PUMPS



TYPE/MODEL	VERTICAL REACH	HORI-ZONTAL REACH	DEPTH OF REACH	END HOSE LENGTH MAX	MAX OUTPUT	MAX PRESSURE	BOOM SECTION	FOLD SYSTEM	NOS OF MODELS
Putzmeister 32 m	30.5	20.4	20.4	4 m	160 m³/h	85 bar	4	Z	1
schwing 34 m	34 m	30 m	21 m	4 m	136 m³/h	85 bar	4	R	3
schwing 36 m	35.2 m	31.2 m	24 m	4 m	138 m³/h	85 bar	4	R	2
Putzmeister 36 m	35.6 m	31.4 m	23.9 m	4 m	160 m³/h	85 bar	4	Z	1
Putzmeister 36 m	35.6 m	31.4 m	23.9 m	4 m	160 m³/h	85 bar	4	RZ	4
Putzmeister 42 m	41.6 m	37.3 m	31 m	4 m	160 m³/h	85 bar	4	RZ	5
Putzmeister 42.5 m	41.6 m	37.3 m	31 m	4 m	160 m³/h	85 bar	4	RZ	6
schwing 42 m	41.8 m	38.5 m	31 m	4 m	160 m³/h	85 bar	4	RZ	5
schwing 43 m	42.3 m	38.3 m	31 m	4 m	163 m³/h	85 bar	4	RZ	5
Putzmeister 46 m	45.5 m	40.5 m	32. m	4 m	160 m³/h	85 bar	5	RZ	1
Putzmeister 47 m	46.1 m	41.1 m	32.2 m	4 m	160 m³/h	85 bar	5	RZ	1
Putzmeister 49 m	48.4 m	44.5 m	33.9 m	3 m	160 m³/h	85 bar	5	RZ	1
schwing 55 m	54.3m	49.1m	38.4	3M	160 m³/h	85bar	5	Z	1
Cifa 55 m	54.3m	49.1m	38.4	3M	160 m³/h	85bar	5	Z	1
Putzmeister 56 m	55.1 m	49.9 m	40.3 m	3 m	160 m³/h	85 bar	5	RZ	1







PLACING BOOMS



STATIONARY PUMPS

Stationary pumps details

Type	DHBT80s-16-175
Maximum theoretical delivery volume	80 m³
Maximum theoretical delivery height	250 m
Maximum theoretical delivery pressure	1000 m
Maximum theoretical delivery pressure	15.7 MPa
Delivery pipe line	Dn 125, 5.5"
Diesel engine power	175 kW
Dimensions (length x width x height)	6600 x 1930 x 2190 mm
Weight	6500 kg

Placing boom details

Type	HG33 al, Without Counter Weight
System, self-climbing	2 x tubular columns, 10 m length each
Arms	4 pcs
Slewing range	360°
Maximum horizontal reach	32.7 m
Maximum vertical reach	32.7 m
Delivery pipe line	Dn 125, 5.5"
Power of motor	30 kW
Pressure of hydraulic system	30 MPa

Placing boom erection and site instruction

Cruciform base	2494 x 2494 mm
Foundation - concrete	4200 x 4200 x 1000 mm
Maximum length of tubular columns	20 m, free standing
Minimum distance between 2 climbing frames	3 m
Angle for climbing position	85°
Angle for rest position	60°
Weight of 4 section arm	4600 kg 9400 x 1300 x 1900 mm
Weight of Turret	4300 kg 3200 x 2600 x 2510 mm
Weight of working platform	1200 kg 2100 x 2750 x 800 mm
Weight of upper tubular column	3685 kg 820 x 820x 10085 mm
Weight of lower tubular column	3685 kg 820 x 820 x 10085 mm
Weight of climbing frame	3 x 750 kg 1500 x 1270 x 450 mm
Floor frame opening	950 x 950 mm
Maximum wind speed - placing	60 km/h, 16 m/s
Maximum wind speed - climbing	28 km/h, 7 m/s
Total weight all in	20800 kg, 20.8 t

TRANSIT MIXER
143 UNITS



ADDITIONAL
VEHICLES
85 UNITS

TRANSIT MIXERS

164 UNITS

CHASIS	CAPACITY	QNTY.
8*4	12 cbm	78
8*4	10 CBM	72



Mercedes-Benz

CHASIS	CAPACITY	QNTY.
8*4	10 cbm	6
8*4	9 cbm	2



SCANIA

CHASIS	CAPACITY	QNTY.
6*4	10 cbm	6

ADDITIONAL VEHICLE

105 UNITS

DESCRIPTION	QNTY.
Cement Bulklers	13
Aggregate Trailers	37
Six Wheeler Trucks/Lorry	5
Shovel	15
Water Tanker	4
Diesel Tanker	3
Pick-ups	28



BFRM is not “simply a concrete supplier” - we provide and develop complete solutions, based on knowledge and experience in addition to applying the latest technology. Our product range is in accordance with American (ASTM), British (BS) and European concrete standards. It also complies with the additional local requirements that is set by the United Arab Emirates. Videlicet, we are offering to our customers a tailored concrete design.

Ordinary Mixes		
C5	C15	C35
C10	C30	

High Performance Concrete- HPC		
C40	C60	C80
C45	C65	C85
C50	C70	C90
C55	C75	C95

For instance, lightweight concrete are according to British Standards (700-2000 kg/m³) and compressive strength in the range 1 - 20 N/mm² (Based on density of LC).

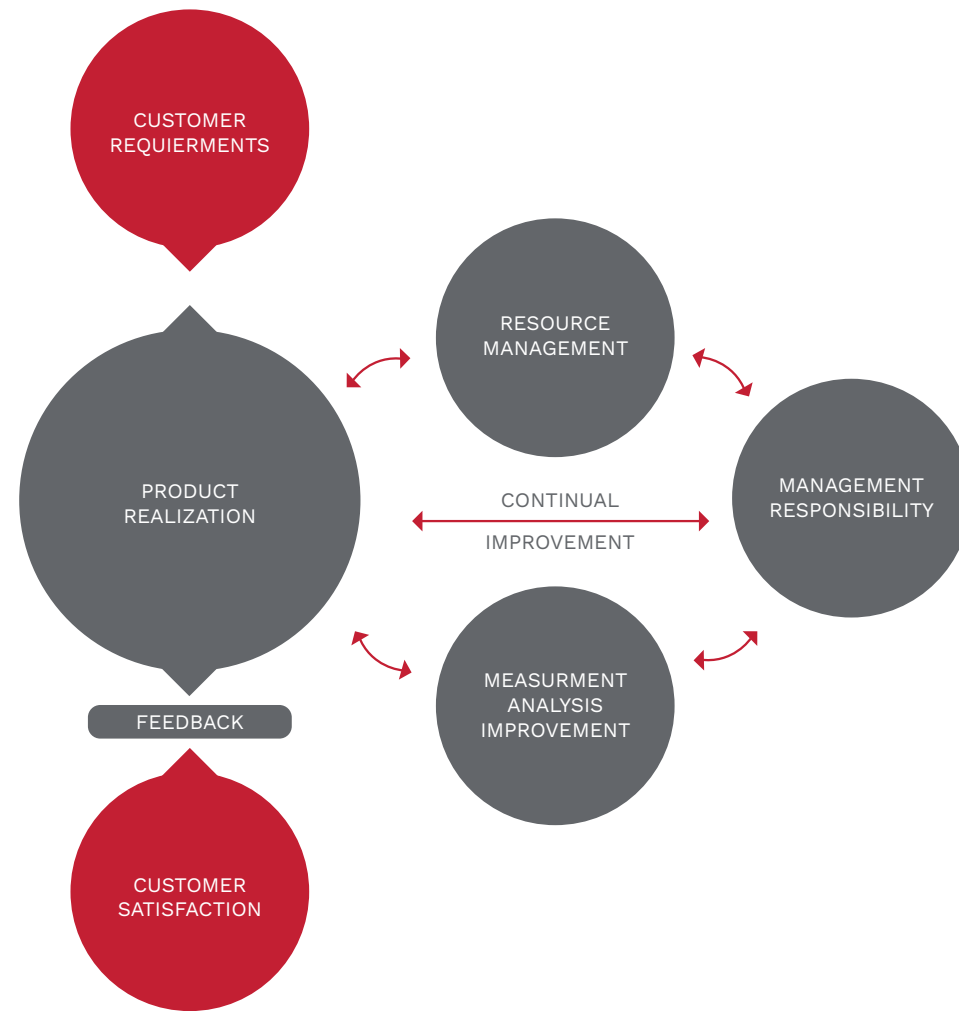
Special Concrete / Mortars / Development
SCC (Self Compacting Concrete)
Lean Concrete
PQC (Pavement Quality Concrete)
Colored / Architectonical Concrete
Early Strength Concrete
Air Entrained Concrete
Shotcrete (Sprayed Concrete)
Foam Concrete
Dewatered Concrete
Underwater Concrete
Fire Resistant Concrete
Screed
Grout / Mortar / Plaster
Low Hydratation Heat Development - Concrete for Massive Construction
Environmental Friendly Program - Reduces Carbon Dioxide Emissions

Additives / Admixtures for Concrete
GGBFS / Fly Ash / Micro Silica
Fibers (Polypropylen / Glass / Steel)
Superplasticizers / Corrosion Inhibitors
Waterproof / Anti-washout Agents
Retarders / Accelerators / Viscosity Agents / Stabilizers





**SUPERIOR
SERVICES TO
OUR FLEET**



QUALITY CONTROL DEPARTMENT

Bin Fadel Ready Mix aims high with regards to the quality and delivery of its products. Thus, BFRM has well equipped main laboratories in Al Ain and Abu Dhabi and site laboratories at each of our batching plants. Without any compromise we assure the quality, the prescribed figures of strength and the required specifications of our clients. We believe that today's fast-paced construction requires efficiency and labor saving measures. We strive to meet our customer's needs at the required pace, our extensive experience eased the mission through applying these effective steps, as stated below:

- Mix design development and testing above standards.
- Cooperating with accredited laboratories.
- Applying on-site concrete testing.
- Providing technical support before and after concrete placement.
- Monitoring of concrete placement and quality.
- Performing trial mixes for all types of concrete.
- Evaluating and recommending solutions to concrete problems.

QUALITY ASSURANCE PLAN

The sampling and testing of concrete and concrete materials is a critical aspect regarding our quality assurance and quality control concerns. We have set a series of control procedures in order to assure the quality of what we produce. Therefore, all materials used in the industry are subjected to pre-testing to confirm the compliance of all standards and administrative orders issued by the client or local authorities. Also, all the relevant materials are thoroughly inspected, tested and systematically stored; the supply trail is being constantly monitored to ensure quality and consistency.

Offering numerous performance mixes sets BFRM as the market leader in providing a wide range of high performance concrete, as well as Pavement Quality Concrete. Whether you need concrete for a patio or a skyscraper, we will be there for you. Our high-performance concrete is designed to improve strength and durability, ease placement and finishing, provide dependable initial setting time and save cost. We simply provide what is best for our clients.



QUALITY MANAGEMENT SYSTEM

BFRM is committed to its QHSE Policy Statement with a simple and well-developed Integrated Management System to enhance the full confidence of QHSE requirements and to deliver such quality services to its customers. In line with BFRM business philosophy to continuously improve the business process to put in benchmark and yield better overall performance, its interested parties are at the top of its priorities. The competency of employee are benchmarked with international quality standards and they are all able to conduct all dealings with high professionalism, proficiency and fairness.

ENVIRONMENT

Our respect towards Mother earth drives BFRM forward. This core purpose is implemented through recycling, resource reduction and promoting Green Concrete. We take safe and responsible environmental methods to handle and dispose of waste in addition to our deep focus on energy efficiency. We always aim to minimize our environmental footprint. Moreover, we continue to prioritize sustainability, make significant investments in the prevention of pollution and build strategic partnerships that improve our environmental performance.



HEALTH AND SAFETY

At BFRM, we believe the well-being of our people is fundamental to our success.

We ensure that everyone on BFRM property is protected through stringent health and safety measures. That is why we strive to go above and beyond the national and international Health Safety & Environmental (HSE) obligations.

Our commitment to achieving our outcomes is demonstrated by the development of our Integrated Quality, Health, Safety and Environment MS which aligns with the requirements ISO 9001:2018, ISO 45001:2018 and ISO 14001:2015 international standards.

We also comply fully with the Abu Dhabi Occupational Safety and Health Centre (OSHAD) requirements and the Department of Industrial Development Bureau Abu Dhabi as the Sector Regulatory Authority. Through our QHSE MS, we have identified and classified all safety issues within our operating boundaries, along with procedures and plans to safeguard against incidents.



CERTIFICATE OF REGISTRATION

This is to certify that the management system of:

Bin Fadel Almazrouei Ready Mix – Sole Proprietorship L.L.C.

Main Site: Sanaiah (Industrial Area), PO Box 17656, Al Ain, United Arab Emirates

has been registered by Intertek as conforming to the requirements of:

ISO 45001:2018

Certified to OHSAS 18001:2007 from 02.02.2016 to 02.01.2020.

The management system is applicable to:

Production and Supply of Ready Mix Concrete.

Certificate Number:
0097802

Initial Certification Date:
02 February 2016

Date of Certification Decision:
02 December 2021

Issuing Date:
02 December 2021

Valid Until:
01 February 2025



 014



Calin Moldovean
President, Business Assurance

Intertek Certification Limited, 10A Victory Park,
Victory Road, Derby DE24 8ZF, United Kingdom

Intertek Certification Limited is a UKAS
accredited body under schedule of
accreditation no. 014.



In the issuance of this certificate, Intertek assumes no liability to any party other than to the Client, and then only in accordance with the agreed upon Certification Agreement. This certificate's validity is subject to the organization maintaining their system in accordance with Intertek's requirements for systems certification. Validity may be confirmed via email at certification@intertek.com or by scanning the code to the right with a smartphone. The certificate remains the property of Intertek, to whom it must be returned upon request.



ISO 45001:2018

ISO 14001:2015

CERTIFICATE
OF REGISTRATION



This is to certify that the management system of:
Bin Fadel Almazrouei Ready Mix – Sole Proprietorship L.L.C.
Main Site: Sanaiyah (Industrial Area), PO Box 17656, Al Ain, United Arab Emirates
has been registered by Intertek as conforming to the requirements of:
ISO 14001:2015
The management system is applicable to:
Production and supply of Ready Mix Concrete.

Certificate Number:
0119908
Initial Certification Date:
02 February 2016
Date of Certification Decision:
02 December 2021
Issuing Date:
02 December 2021
Valid Until:
01 February 2025



Calin Moldovean

Calin Moldovean
President, Business Assurance
Intertek Certification Limited, 10A Victory Park,
Victory Road, Derby DE24 8ZF, United Kingdom
Intertek Certification Limited is a UKAS
accredited body under schedule of
accreditation no. 014.



In the issuance of this certificate, Intertek assumes no liability to any party other than to the Client, and then only in accordance with the agreed upon Certification Agreement. This certificate's validity is subject to the organization maintaining their system in accordance with Intertek's requirements for systems certification. Validity may be confirmed via email at certificate.validation@intertek.com or by scanning the code to the right with a smartphone. The certificate remains the property of Intertek, to whom it must be returned upon request.



CERTIFICATE
OF REGISTRATION



This is to certify that the management system of:
Bin Fadel Almazrouei Ready Mix – Sole Proprietorship L.L.C.
Main Site: Sanaiyah (Industrial Area), PO Box 17656, Al Ain, United Arab Emirates
has been registered by Intertek as conforming to the requirements of:
ISO 9001:2015
The management system is applicable to:
Production and supply of Ready Mix Concrete.

Certificate Number:
0119909
Initial Certification Date:
02 February 2016
Date of Certification Decision:
02 December 2021
Issuing Date:
02 December 2021
Valid Until:
01 February 2025



Calin Moldovean

Calin Moldovean
President, Business Assurance
Intertek Certification Limited, 10A Victory Park,
Victory Road, Derby DE24 8ZF, United Kingdom
Intertek Certification Limited is a UKAS
accredited body under schedule of
accreditation no. 014.



In the issuance of this certificate, Intertek assumes no liability to any party other than to the Client, and then only in accordance with the agreed upon Certification Agreement. This certificate's validity is subject to the organization maintaining their system in accordance with Intertek's requirements for systems certification. Validity may be confirmed via email at certificate.validation@intertek.com or by scanning the code to the right with a smartphone. The certificate remains the property of Intertek, to whom it must be returned upon request.



ISO 9001:2015

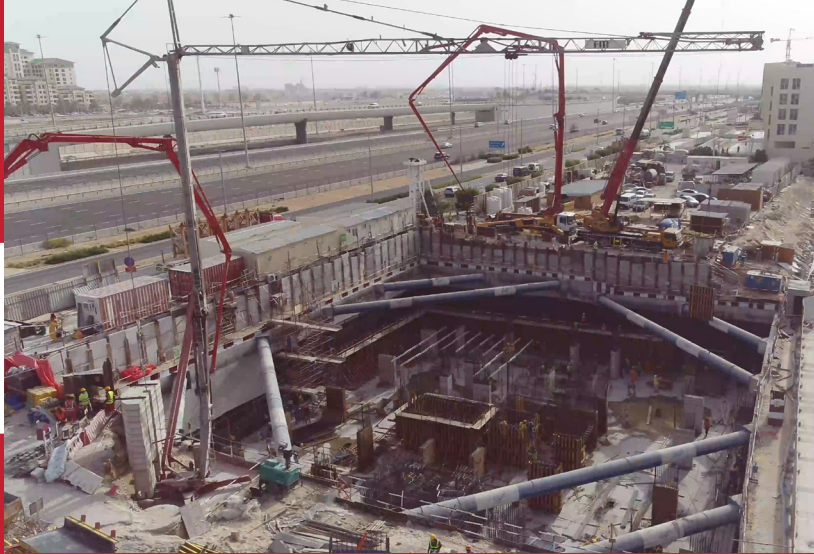


APPROVALS CLIENTS PROJECTS



BFRM emirates ready Mix LLC is a listed vendor/ concrete supplier of the companies and government institutions mentioned below. We consistently receive approvals for our products and services in all our batching plant locations. and we shall continue to comply and support our clients on their initiatives for growth and development in the United arab emirates.





APPROVALS CLIENTS PROJECTS





- Al Rayan Mall Al Ain
- Al Nahkeel Health center Jimi Al Ain
- Concrete Supplied to Al Jaber Building for Construction of 204 Villas-Sweiha
- Concrete Supplied to Al Jaber Building for Construction of 306 Villas-Al Saad
- Administratin Building Crisis Managemen Airport Alain
- Calidus Factory in Al Ain Airport
- Contruction of Villas of Arabtec in Al Ain
- Military Camp Project at Sweihan
- Al Ain Ladies Club - for Musanada
- Construction of 518 Complex Villas at Al Ain
- Villas Projects Abu Dhabi, Western Region, Al Ain
- Etisalat Towers Project, several location at AL AIN
- Al Wagan Hospital - Saha, Al Ain
- Institute of Applied Technology for Girls at Al Ain
- Nibras Stage 1 Project in Al Ain
- CMW-12097-C001 Construction of Air Craft Apron at Al Ain Project - Phase 1
- CMW-12097-C002 Construction of Air Craft Apron at Al Ain Project - Phase 2
- Poultry Farm and 20 Compound Villas in Ajban
- Sweihan Clinic Project in Sweihan
- Ministry of Interior - Civil Defense Project -
- Training center in Royal Guards, Al Ain
- Emirates Identity Authority in Al-Jimi, Al Ain
- 5 floor commercial Building in Al-Niydaat, AlAin
- 15 Commercial Buildings 5 Floors in Town Center, Al Ain
- 5 floors commercial building in Kuwaitat, Al Ain
- 5 floors commercial Building in Al-Jimi, Al Ain
- American School, Al Ain
- Rowdat Al-Kmza Higher Secondary School in Al Yaher, Al Ain
- Sheikh Zayed Bin Nahyan Family 8 big commercial building in Al-Muatraad
- Building in Al-Muatraad, Al Ain
- Al Ain City Municipality - Department of Defense Project - Air Force College, Al Ain
- Supply of Concrete for the Project - Villa Complex of H.H. Sheikhha Wadeema Bint Saeed Bin Shakhbut Al Nahyan in Al Ain
- Al Ain City Municipality - Public Works Department - 1 School in Sulimat, Al Ain
- Al Ain City Municipality - Public Works Department - 1 School in Al-Maqam, Al Ain
- Project in Hilli, Tawayia and Maqam, Al Ain
- Al Ain City Municipality - 7 Supermarkets
- Higher Secondary School in Falaj Haza, Al Ain
- Al Ain City Municipality - Department of Defense - Storage in Defense area project no.1350, Al Ain
- Al Ain City Municipality - Department of Defense Project - 4 stores in Al Ain Airport, Al Ain





- Al Ain City Municipality - Department of Defense
- Recruitment training center at Shkh.Sultan Cantonment, AL Ain
- Al Ain City Municipality - Department of Defense
- Construction and maintenance at R.C flooring at Al Dhafra, AL Ain
- BNPP - PHYSICAL PROTECTION SYSTEM - MARINE BARRIER
- CONSTRUCTION OF INTERNAL ROADS & INFRAS TRUCTURE PROJECT IN SHAWAMEKH
- PHASE III - CONSTRUCTION OF SIX WAREHOUSES AND MOSQUE FOR ABU DHABI BUSINESS HUB AT ICAD
- MAYAN RESIDENTIAL DEVELOPMENT AT YAS ISLAND
- LULU HYPER MARKET MADINAT ZAYED WESTERN REGION
- CONSTRUCTION FOR EMIRA TES HOUSING NEIGHBORHOOD AT SAMHA - 150 VILLAS, ABU DHABI
- PGC - 44 ZAYED MILITARY CITY
- PGC - 44 ZAYED MILITARY CITY
- RESIDENTIAL BUILDING 2BUILDING 2B+G+6F AT SECTOR RBW-3 PLOT NO C-20 AL RA HA BEACH - ABU DHABI
- PROJECT DUNES INTERNATIONAL SCHOOL AT MOHAMED BIN ZAYED CITY
- CMW PROJECT IN ABU DHABI - AL

DHAFRA , MUQATARA , AL REEF, SHAHAMA, TAWEELAH,GHANTOOT

- PROJECT OF 5 BUILDING FOR LABOUR ACCOMODATION IN MAFRA Q ABU DHABI
- EMIRA TES MOTOR COMPANY - CAR PARK & SHOWROOM - AIRPORT ROAD UMM AL NAR (P664)
- PGC/CFD/572/5/2017/435 - MTFP-B-000-12A - SWEIHAN ABU DHABI
- AD-540- YAS ISLAND DEVELOPMENT - INFRAS TRUCTURE & PUBLIC REALM SHELL & CORE & DRY DACK
- AL DAFRA AIRBASE PROJECT
- ETIHAD SCHOOL SHAKBOUT CITY
- SAFECARE MEDICAL KIZAD
- CONSTRUCTION OF ROADS AND INFRAS TRUCTURE FACILITIES AND JIFFIN INDUSTRIAL AREA
- CONSTRUCTION OF CICPA FACILITIES AT BRAKA H PHASE 1
- 33KV PRIMARY SUBSTATION AT TAWAZUN INDUSTRIAL PARK
- CONSTRUCTION OF 33/11 KV, 4X4MVA PRIMARY SUB STATION & EXTENSION OF BAHYA GRID
- CONSTRUCTION OF STORM WATER NETWORK IN SILA CITY - WRM-032-15
- PROJECT FOR DEPARTMENT OF MUNICIPALITY AFFAIRS IN ABU DHABI





- AL FORSAN SEWAGE AND TSE CONNECTIONS
- EMERGENCY & CRISIS BUILDING AT MADINAT ZAYED
- FEDERAL TRANS FORMER MODIFICATION WORKS - MUSSAFFAH
- PRIVATE DET. PROJECT FOR CROWN PRINCE COURT AT KHALIFA CITY A
- CMW - CONSTRUCTION OF SEWERA GE NETWORK AND SEWERA GE TREATMENT AT ZAYED MILITARY
- SIEMENS 33KV SUB STATION TAWEELAH
- ETISALAT PROJECT IN SILA - WESTERN REGION
- MILITARY CAMP PROJECT AT SWEIHAN
- COMMAND OF MILITARY WORKS WAREHOUSE PROJECTS IN WESTERN REGION
- POLICE GHQ BUILDING IN MUROOR ROAD
- CONST. & MAINT. OF DOG SECTION FOR POLICE SERVICES IN AL FAYA
- MILITARY AUTOMOTIVE FACTORY AT TAWAZUN
- NIMR AUTOMOTOVE FACTORY AT TAWAZUN
- AL GRUM VILLA COMPOUNDS
- MINISTRY OF INTERIOR DEPORTATION COMPLEX AL WATHBA (FOR ABU DHABI MUNICIPALITY)
- 2012 SCHOOL REFURNISHMENT PROGRA M, SCHOOL FOR 800 STUDENT AT AL SILLA
- AMERICAN INTERNATIONAL MEDICAL COMPLEX, KHALIFA CITY A
- CMW 48 MILITARY BUILDINGS AT MAHAWI
- SWEIHAN CLINIC PROJECT IN SWEIHAN
- AL BUSTAN HOSPITAL PROJECT AT MUSSAFFAH
- ADNOC PETROL STATION PROJECT IN ABU DHABI AND THE WESTERN REGION
- INTERNAL ROAD WORK AL SILLA
- MILITARY PROJECT AT GAGA ISLAND, AL SILLA ,WESTERN REGION
- SGD-12 PROJECT (SHAH-HAMEEM-LIWA)
- QUASWERA AIRBASE PROJECT - APRON & INFRUSTRUCTURE (CMW - 10022 - C 003)
- MILITARY TRA INING CENTRE IN AL HAMRA
- CONSTRUCTION OF BRIDGE FOR AL HAMRA TRA INING CITY CAMP NO:136801 CMW - 9003 - C006
- DESIGN & CONST. OF HAY FEED STORA GE
- VEHICLE INSPECTION CENTERS IN ABU DHABI
- COMMERCIAL & RES. BLDG PROJECT IN MUSSAFFAH AND WARE HOUSE IN ICAD
- ABU DHABI BREAKWATER DEVELOPMENT
- ENEC NUCLEAR POWER PLANT - CORE LOCS PROJECT
- ENEC CONSTRUCTION OF 200 UNITS STAFF ACCOMODATION
- POLICE ACCOMODATION BANIYAS BUILDINGS IN MORROR ROAD, COMPOUND VILLA PORJECT
- VARIOUS ETISALAT TOWERS & CIVIL WORKS IN ABU DHABI
- MILITARY PROJECTS AT TAWEELAH- ABU DHABI



